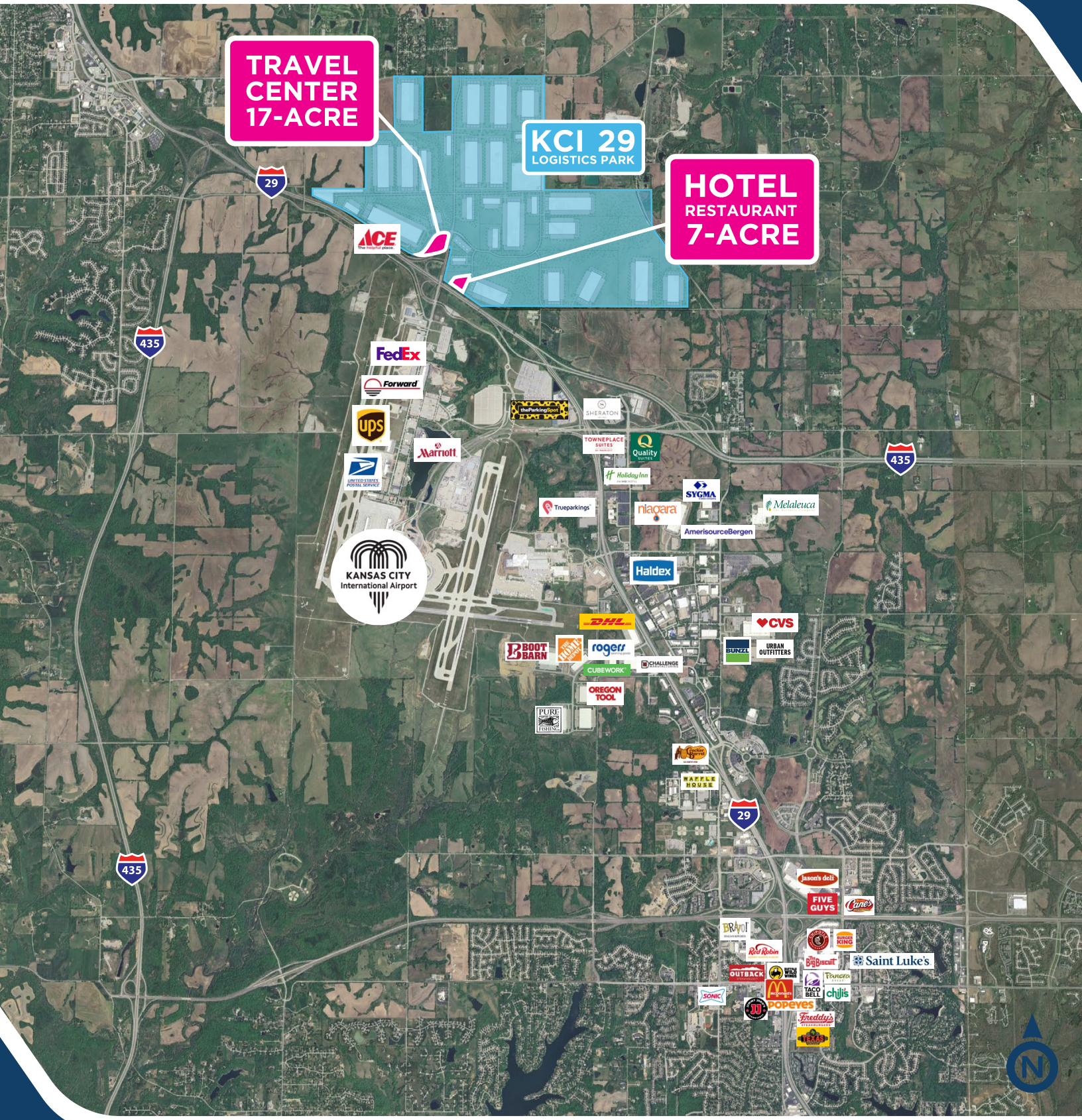


# KCI 29 LOGISTICS PARK | COMMERCIAL

MEXICO CITY AVENUE & I-29 | KANSAS CITY, MO

816.455.2500  
huntmidwest.com

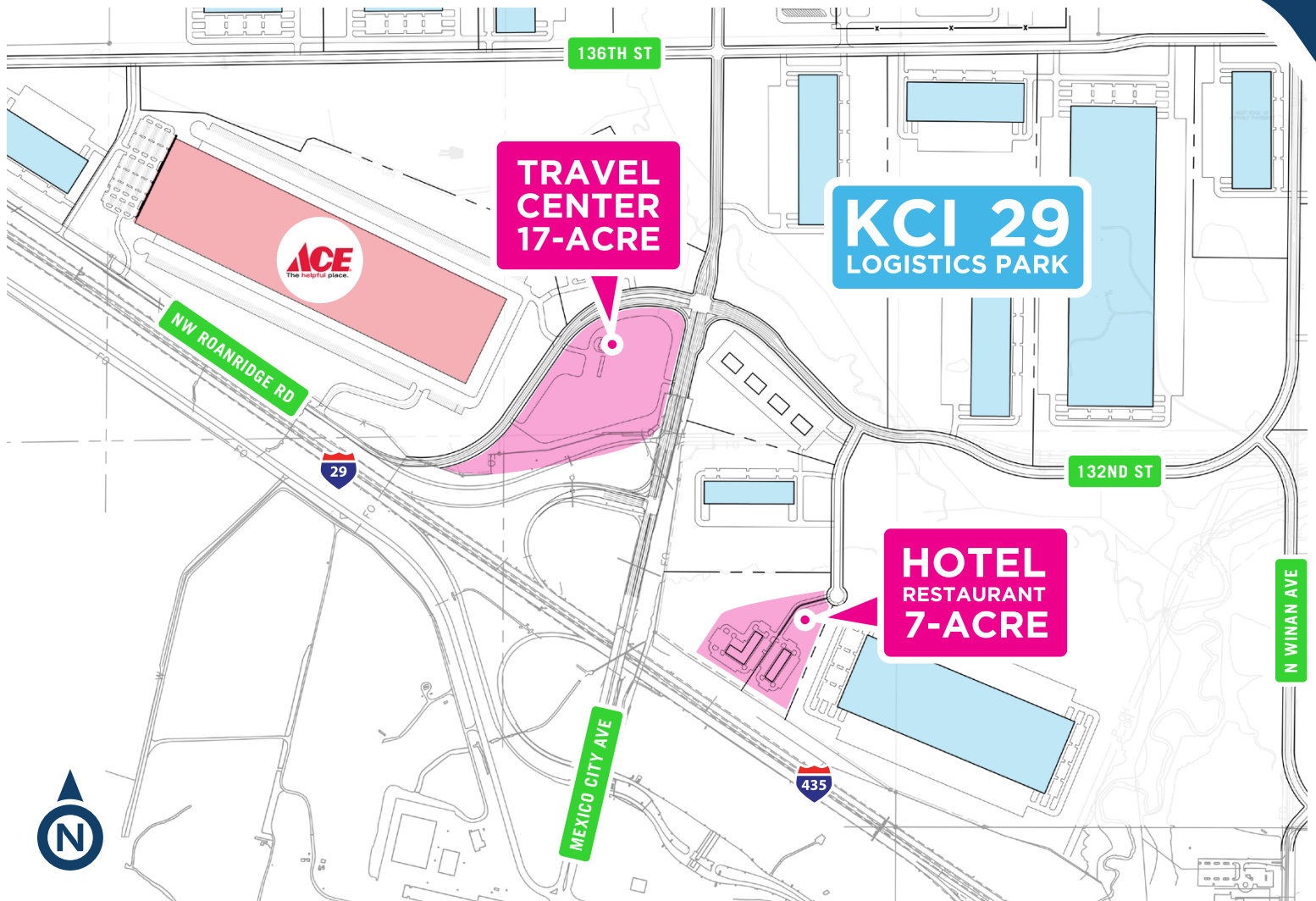




# KCI 29 LOGISTICS PARK | COMMERCIAL

MEXICO CITY AVENUE & I-29 | KANSAS CITY, MO

816.455.2500  
huntmidwest.com



## LOCATION FEATURES:

- ✓ Direct highway access and visibility to I-29 and I-435
- ✓ 50,000 vehicles per day on I-29
- ✓ 20M SF at full development
- ✓ Over 9,000 employees and 45,000 trucks daily at full development
- ✓ Over 45,000 employees and 3,500 businesses located within 10 minutes
- ✓ KCI Airport has close to 12M passengers annually
- ✓ Adjacent to KCI Air Cargo operations
- ✓ Pad graded travel center and hotel site with all utilities

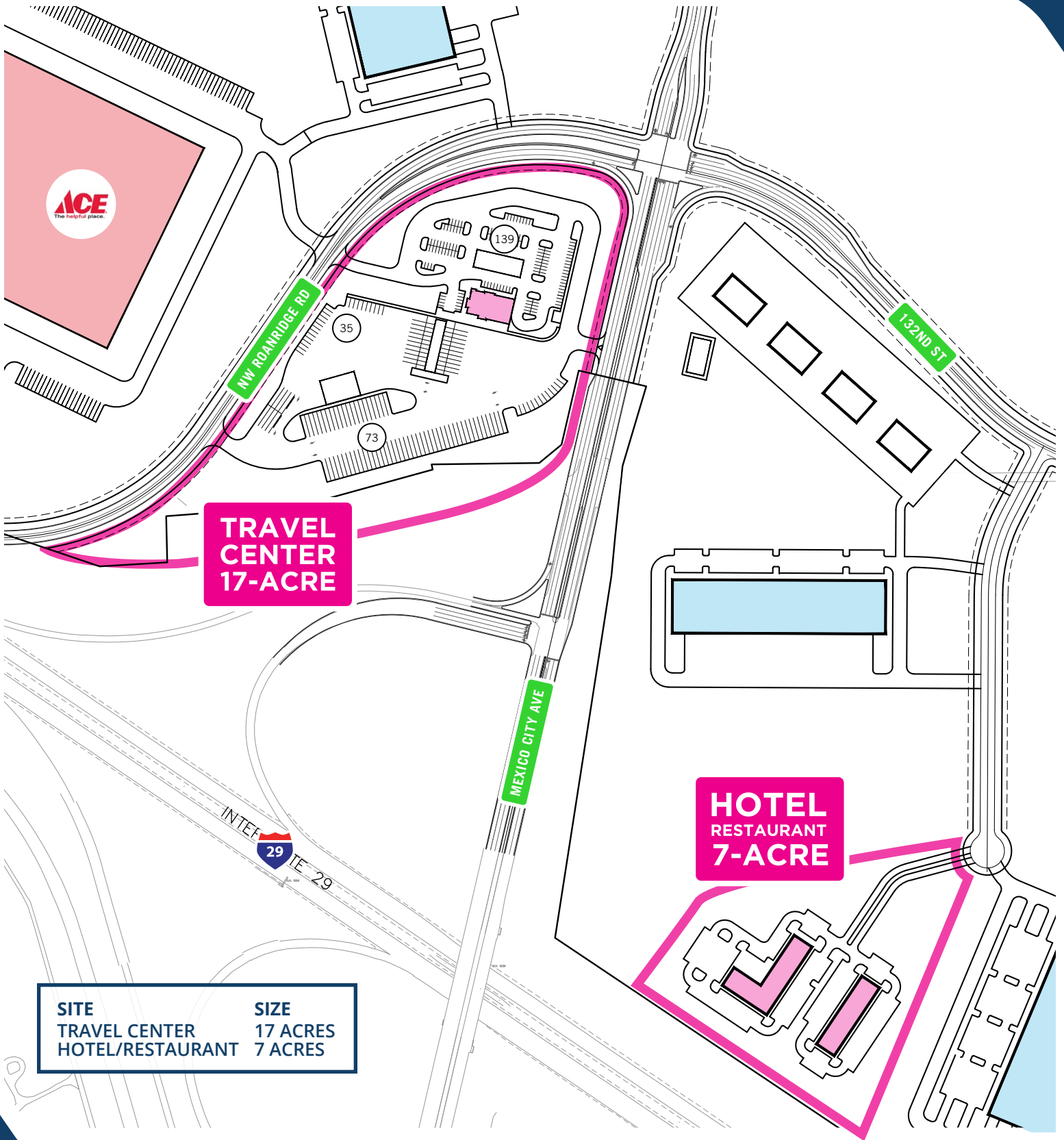
MORE INFO ABOUT  
KCI 29 LOGISTICS PARK?  
PLEASE SCAN.



# KCI 29 LOGISTICS PARK | COMMERCIAL

MEXICO CITY AVENUE & I-29 | KANSAS CITY, MO

816.455.2500  
huntmidwest.com



| SITE             | SIZE     |
|------------------|----------|
| TRAVEL CENTER    | 17 ACRES |
| HOTEL/RESTAURANT | 7 ACRES  |



FOR MORE  
INFORMATION  
CONTACT

AARON SCHMIDT  
816.459.4285  
ASchmidt@HuntMidwest.com